

- In addition to routine checks for each use, PPE should regularly undergo a detailed inspection by a competent person. Petzl recommends an inspection every 12 months and after any exceptional event in the life of the product.
  - PPE inspection should be conducted with the manufacturer's Instructions for Use.
- Download the instructions at [PETZL.COM](https://www.petzl.com).

## TRAC / TRAC PLUS / TRAC GUIDE / TRAC GUIDE LT / TRAC CLUB



### 1. Known product history

Any PPE showing questionable degradation should be quarantined, pending a detailed inspection.

The user should:

- Provide precise information on the usage conditions.
  - Report any exceptional event regarding their PPE.
- (Examples: fall or fall arrest, use or storage at extreme temperatures, modification outside manufacturer's facilities)

### 2. Preliminary observations

Verify the presence and legibility of the serial number and the CE mark.

**Note:** the serial number code on our products is evolving. Two types of code will coexist. See below for details on each serial number code.

Code A:

**00 000 AA 0000**

Year of manufacture	.....	.....	.....	.....
Day of manufacture	.....	.....	.....	.....
Name of Inspector	.....	.....	.....	.....
Incrementation	.....	.....	.....	.....

Code B:

**00 A 0000000 000**

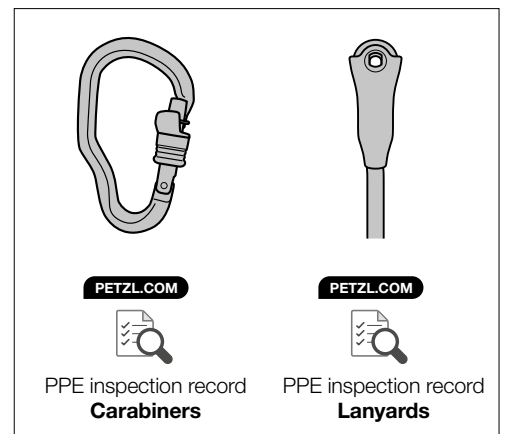
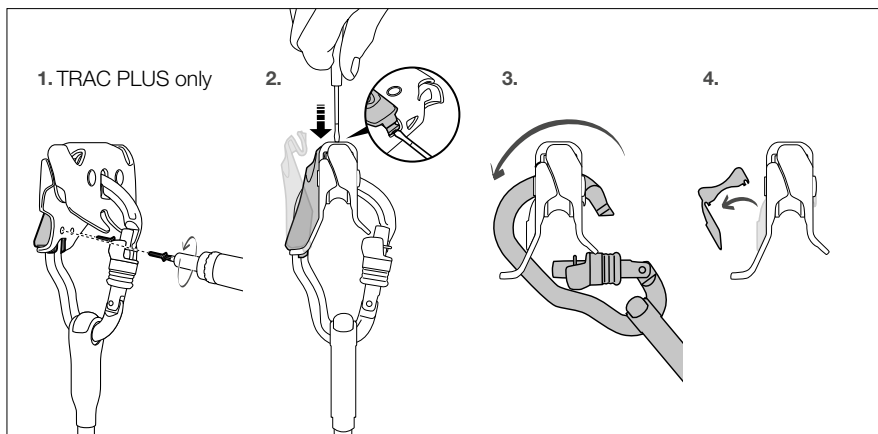
Year of manufacture	.....	.....	.....	.....
Month of manufacture	.....	.....	.....	.....
Batch number	.....	.....	.....	.....
Incrementation	.....	.....	.....	.....

Verify that the product lifetime has not been exceeded.  
 Compare with a new product to verify there are no modifications or missing parts.

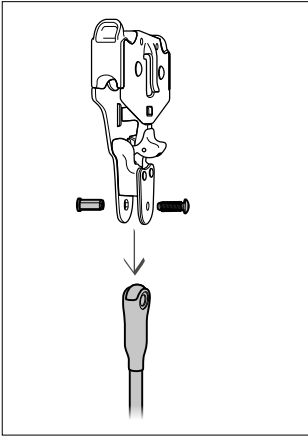
### 3. Preparing the product for PPE inspection

- For inspecting your TRAC, TRAC PLUS, TRAC GUIDE, TRAC GUIDE LT or TRAC CLUB, be sure to disassemble them so that each part may be inspected separately.

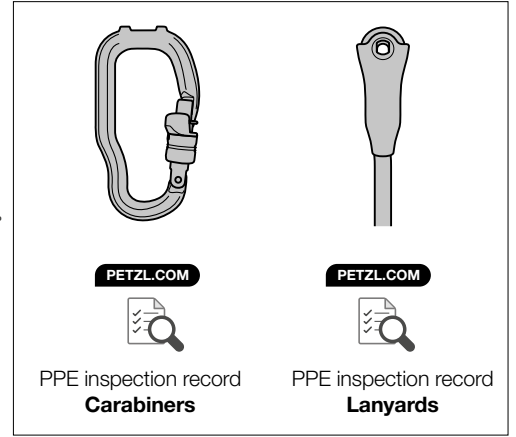
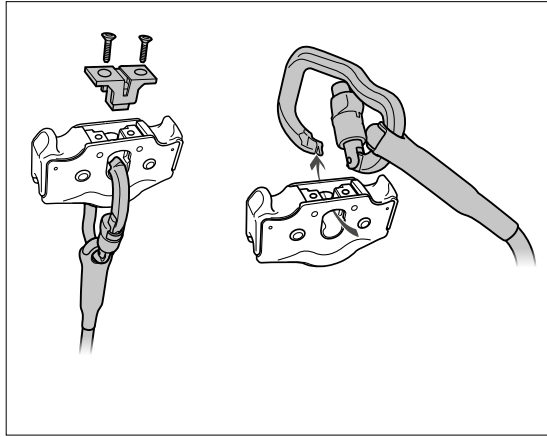
TRAC / TRAC PLUS



TRAC CLUB



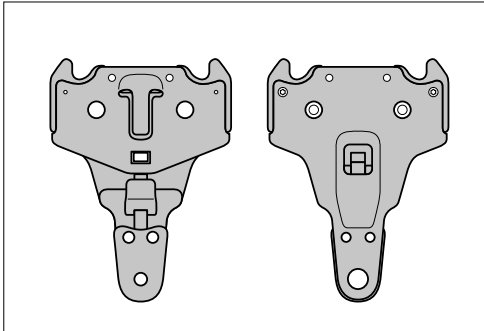
TRAC GUIDE / TRAC GUIDE LT



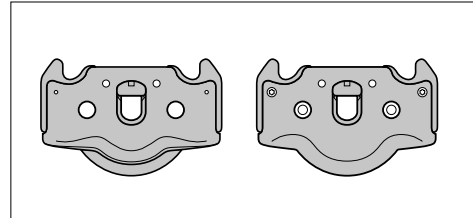
#### 4. Checking the condition of the frame

- Check the condition of the frame (marks, deformation, cracks, wear, corrosion...).

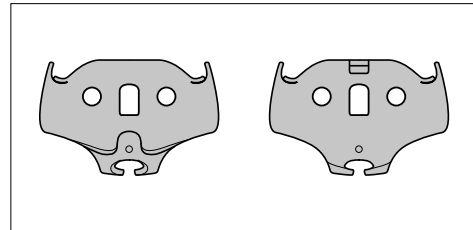
TRAC CLUB



TRAC GUIDE / TRAC GUIDE LT

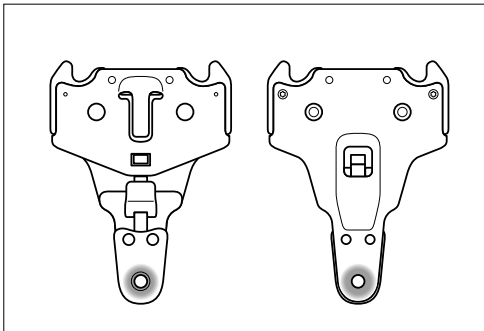


TRAC / TRAC PLUS

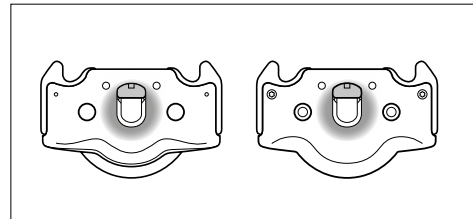


TRAC CLUB

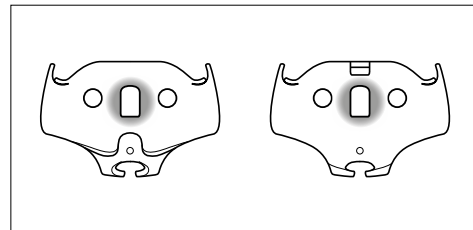
- Check the condition of the attachment holes (marks, deformation, cracks, wear, corrosion...).



TRAC GUIDE / TRAC GUIDE LT



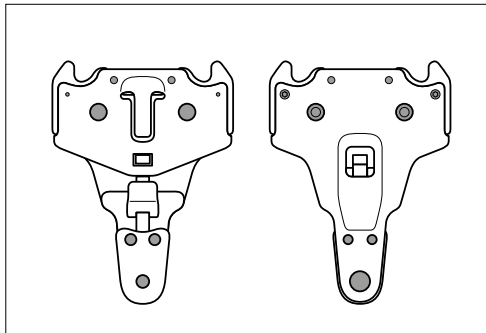
TRAC / TRAC PLUS



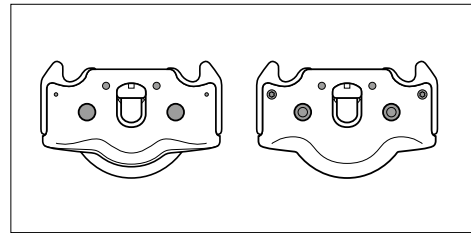
## 5. Checking the condition of the sheaves

- Check the condition of the sheave axles and rivets (marks, deformation, cracks, wear, corrosion, lack of play...).

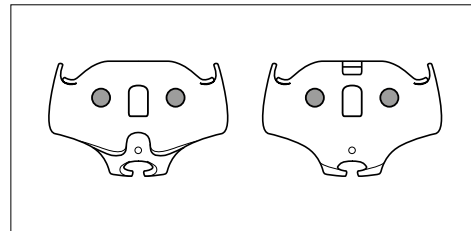
TRAC CLUB



TRAC GUIDE / TRAC GUIDE LT

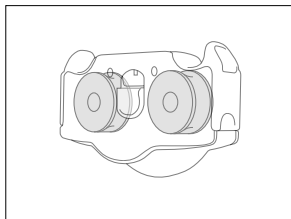


TRAC GUIDE / TRAC GUIDE LT



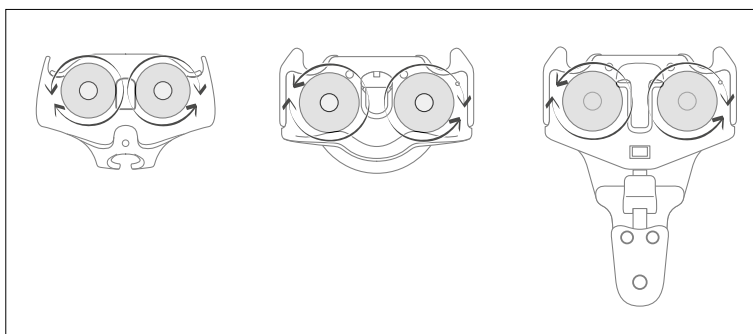
- Check the condition of the sheaves (marks, deformation, cracks, corrosion, absence of foreign bodies).

TRAC / TRAC PLUS / TRAC CLUB / TRAC GUIDE / TRAC GUIDE LT



TRAC / TRAC PLUS / TRAC CLUB / TRAC GUIDE / TRAC GUIDE LT

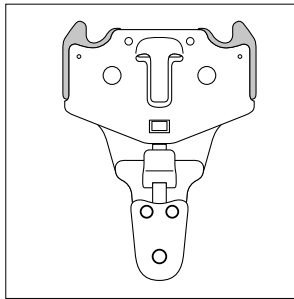
- Check that the sheaves turn freely.



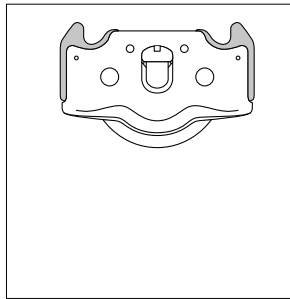
## 6. TRAC CLUB / TRAC GUIDE / TRAC GUIDE LT - Checking the impact surfaces

- Check the condition of the impact surfaces (marks, deformation, cracks, wear, absence of play...).

TRAC CLUB

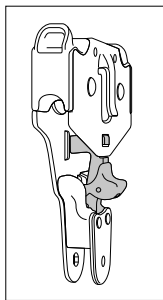


TRAC GUIDE / TRAC GUIDE LT

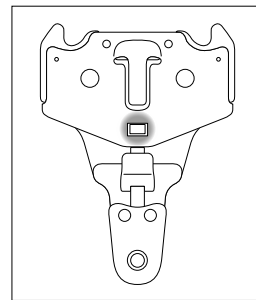


## 7. TRAC CLUB - Checking the locking system

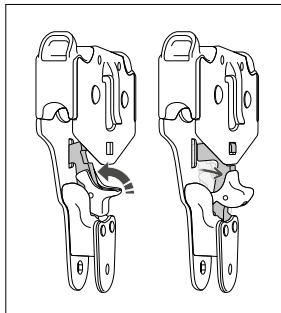
- Check the condition of the locking gate and of the trigger (marks, wear, deformation, cracks, corrosion).



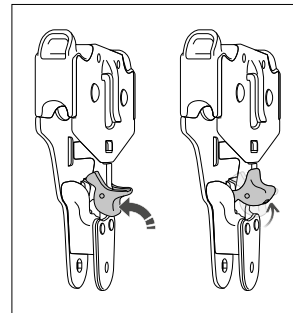
- Check that the locking hole is clear.



- Manually verify that the locking gate opens completely, and that the return spring closes the gate when you release it. If necessary, clean with soap and water, then lubricate lightly (e.g. with graphite powder).

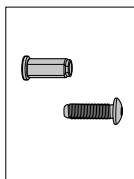


- Check the effectiveness of the trigger's return spring, and verify that the system locks. If necessary, clean with soap and water, then lubricate lightly (e.g. with graphite powder).

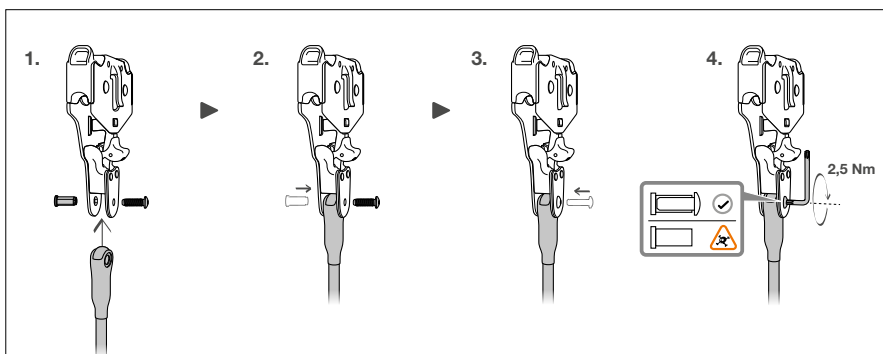


## 8. TRAC CLUB - Checking the screw / spacer assembly and reinstalling the lanyard

- Check the condition of the screw and spacer assembly on the TRAC CLUB (marks, deformation, cracks, wear, corrosion).

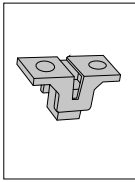


- Reinstall the lanyard on the TRAC CLUB's screw / spacer assembly. Use thread-locking fluid on the screw. Check the tightness of the screw.

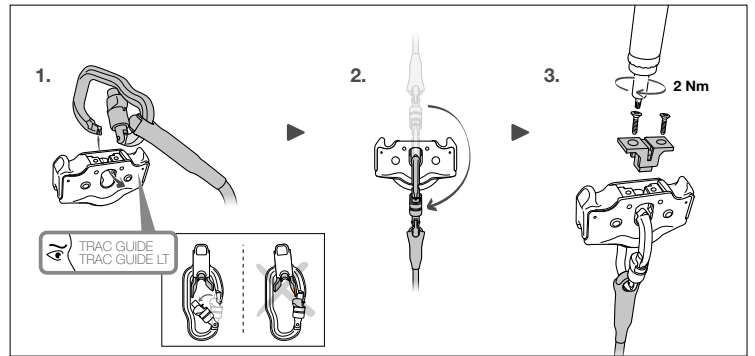


## 9. TRAC GUIDE / TRAC GUIDE LT - Checking the spacer and reinstalling the connector

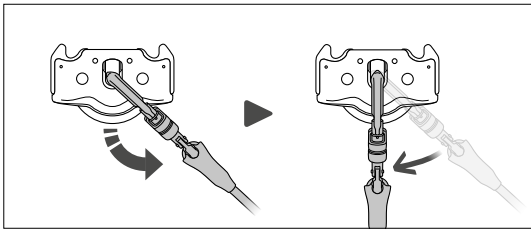
- Check the condition of the spacer (marks, deformation, cracks, wear, corrosion).



- Reinstall the connector and lanyard, then reinstall the spacer and verify that the screws are properly tightened.

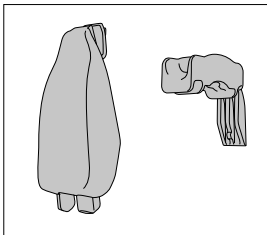


- Check the effectiveness of the return spring. (The carabiner should return to its initial position by spring action, not just by gravity.)

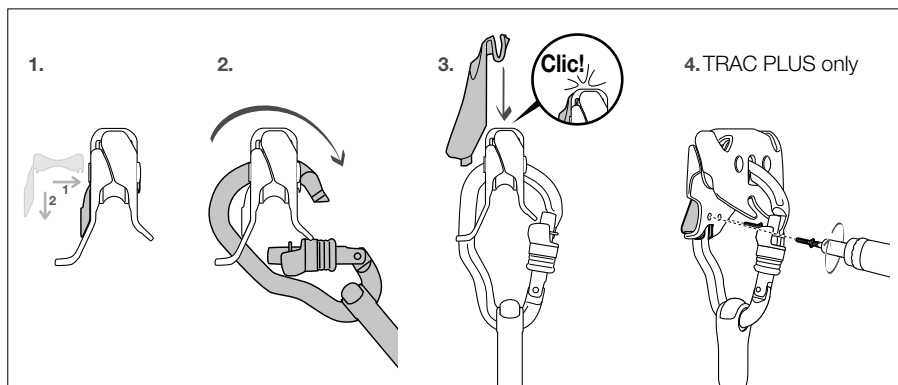


## 10. TRAC / TRAC PLUS - Checking the positioning cover and the carabiner support, then reinstalling the connector

- Check the condition of the positioning cover and of the carabiner support (marks, deformation, cracks, wear).



- Reinstall the connector and lanyard, then reinstall the positioning cover and the carabiner support, then verify that the screws are properly tightened.

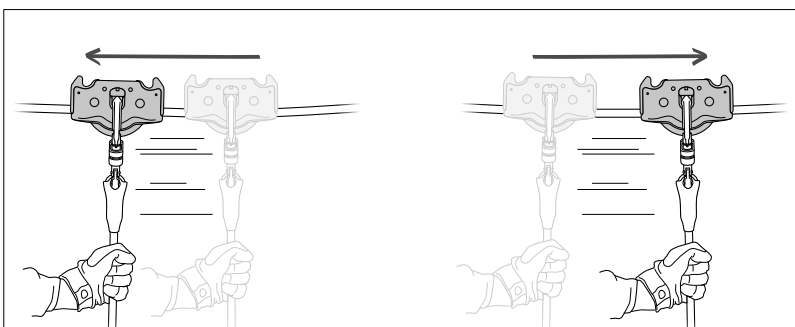


## 11. Function check

- Install the pulley on a compatible cable.

Check that it slides properly on the cable in both directions.

TRAC / TRAC PLUS / TRAC CLUB / TRAC GUIDE / TRAC GUIDE LT



## 12. Appendices: examples of worn pulleys that should be retired or repaired

- Significant wear of the impact surface



- Wear of the impact surface



- Defective sheave



- PPE modification



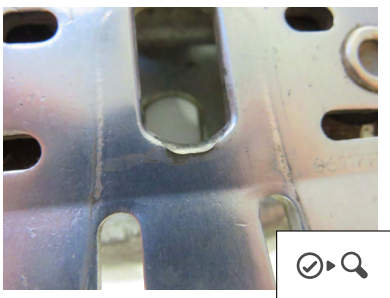
- Incompatible carabiner



- Poorly installed positioning cover



- Deformation of the attachment point



- Deformation of the pulley frame



- Positioning cover needing replacement

